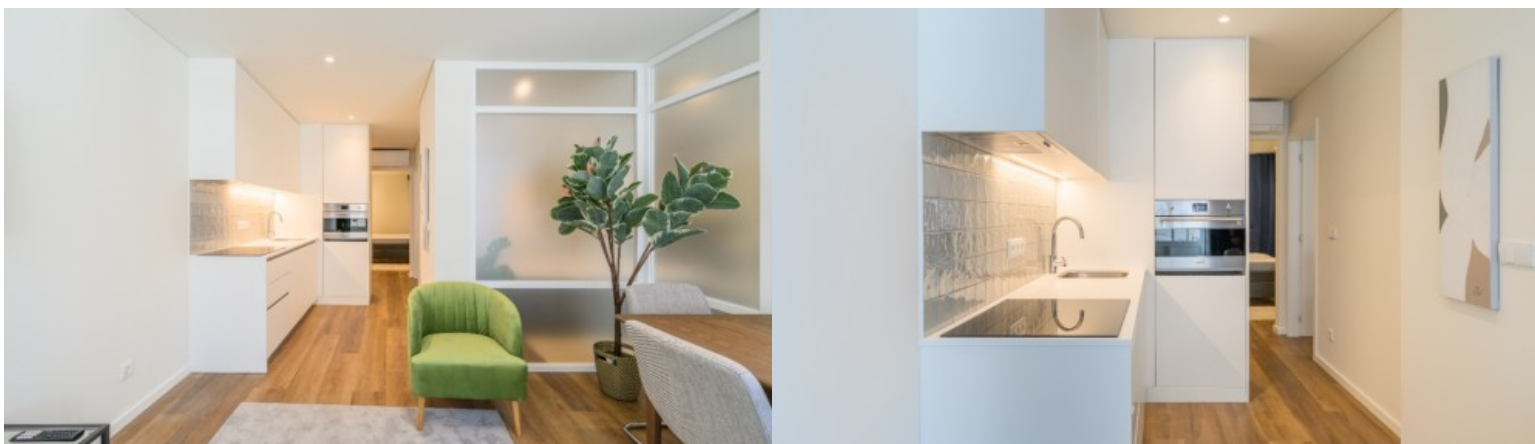


Marquesa Palace Development - Porto



LUXIMOS

CHRISTIE'S
INTERNATIONAL REAL ESTATE



**NEW APARTMENT WITH
BALCONY, FOR SALE, IN
THE HISTORICAL CENTER
OF PORTO, PORTUGAL**

Ref. LS04484-F

€ 389 000

Palácio Marquesa is the most recent rehabilitation project in the historic center of Porto, perpetuating the design of the urban architecture of the 15th century and adding the quality, refinement and comfort of the 21st century. The project will consist of 16 luxury residential units, of one and two bedroom typologies, with areas varying between 70.85m² and 143.85 m². All units include air conditioning, double glazing, and fully equipped kitchens. The building is located in the oldest part of the city of Porto, next to the emblematic São Bento Station and the elegant Dom Luís I Bridge. Situated in the historical area of the city, this property enjoys a privileged location due to its central location, where it is possible to...

Area: 71 m² | 763 sq ft
Bathrooms: 1

Bedrooms: 1
Energy efficiency: B-